





Indian Botanic Garden Library

BOTANICAL SURVEY OF INDIA

CLASS NO .....

BOOK NO. *STI-C*

ACC. NO. *B-10,131*

H  
●



I

●

PS

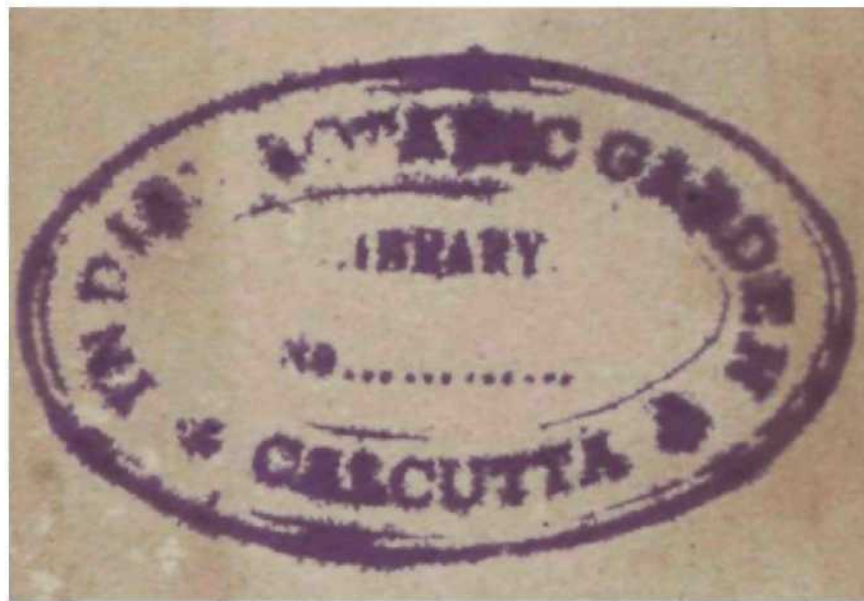
MWB

1 m  
fi

iHORtBDIRtGJ

CALCVTT. 49

1 HB





STIRPES CRIPTOGAMÆ\*

VOGESO-RHENANÆ

QUAS

IN RUIJV 1 STJPERTORIS INFERIORI.SQI K. NEC VCA  
VOGESORUM PRJEFECTUKI9

COLLEGERUNT

J. B. MOUGEOT BilMensi.s, Med. Doct-7 C. NESTLEft, Argent in on sis, Facnil.  
Argent. Botan. Prof.j el W. P. SCBDHPEE, Mtisei ml  
Hi^tor. nauir. Academ. Argent. Conservator.

—DEUS 0, M. el oaiura cihil Iruisiro crcaverit.  
Posleros tanien tol itiventuros fore utililaies ex muscb  
iiuguror, quoi ex reliquis v^etdbiitbns. —

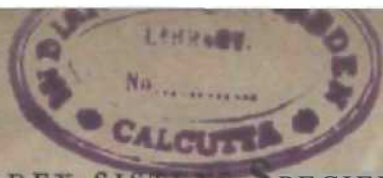
Lion : Cùt bono t Ancen, Acalli lorn. III, p. a4'.

FASCICULUS XIII.

---

HRUYERII VogMorum. i85«.





INDEX SISTENS SPECIERUM NOMINA FASCICULI XIII.

A en u Ion muticiim <i>Midi</i>	N <sup>B</sup> 1204.	<i>Hypnum paDescens</i> <i>Fi7/</i>	N <sup>o</sup> 1224.
Anomodon longifolius <i>Hartm.</i>	1250.	<i>lypmiin Vancheri desquermx.</i>	12-27.
Aspiilmin iijiiuum <i>Swartz.</i>	1205.	<i>Hysterium cladopfailuin IdveilM.</i>	1*27-y.
Aspidium Brannii <i>Sftenn.</i>	1201.	<i>Leskea Dervoaa Myrin.-Br. el Sch,</i>	1251.
Aspidhim rigid am <i>Sioarlz.</i>	1202.	<i>Lyngiia tacolor .4/. Jirauu.</i>	12H7,
Baibuto HLjiiit <i>Sclttdts.</i>	1200.	<i>Melampsora betulina Desraax,</i>	127IL
<b>Barbala mucronifolia Bt\ ei Schimp.</b>	<b>1-210.</b>	<i>Melanconium ovatum DtnJt.</i>	1257.
<b>Rryimi liimiiin Skreh.</b>	<b>1216.</b>	<i>Melanconuoi Ephsrospermiin Link,</i>	1258.
<i>Bryamcapillarev. cochlearifoliamft*.</i>	<b>I-JIT.</b>	<i>.Mcli-^ij-n vnriuns Ag.</i>	1500.
<i>Itrvuni turiiim:tulum v. tatifolimn Jir.</i>	1218.	<i>Herisox&gt;[Ki&gt;rta \i&lt;ol i -&gt; huiz.</i>	1279.
<i>Calicim Digram v. it. cartam 5) '&lt;&lt;&gt;&gt;</i>	1257.	<i>Mkn&gt;ih\riuu! BBCroocopicuin Desm.</i>	120(i,
<i>Campylopas fragiliB fr. ri Srhimp.</i>	1212.	<i>Neott&gt;&gt; &lt;&gt;ra Cari&lt; tun fleam.</i>	121>-t,
<i>Campylopus lorocens llr. ( Si-lump.</i>	1215.	<i>Nitella syncarpa Kutz.</i>	1278,
<i>ChsBnocarpns SimoDroi Dwnax.</i>	1244.	NOM<K i^rintMMpbavri inn Ail/;	1285.
<i>Cbara aspera Witid.</i>	1*77.	<i>Nos tot<sup>1</sup> purparascriti U'utz.</i>	1281.
<i>C. . . . . Vrbuti 'Desmaz.</i>	1267.	<i>Nost(M \- irii'&lt;-&gt;.iiiiii I otucA.</i>	1282.
<b>Cladoni:i tintlinaia Sch&amp;T-</b>	1255.	<i>OrilH'tridnnii omobton v. b. lir.</i>	12Mf.
<b>Clalkmta oiylecLi Ftrrke.</b>	1256.	<i>OscilJaria Fnrl&gt;hii Aii/r.</i>	1281).
<i>CilosLeriujs Klir* tiberii Meneqh.</i>	1298.	<i>&lt;K. i;aria princeps Kutz.</i>	1288.
<i>3&lt;jsl*ri(iin -iti;iitiil(iiii EhrenS.</i>	1297.	<i>PaniM*lii Mougeoti Scher.</i>	1254.
<i>Coccc.fn-iuw lauco'l-nurn Ehrenb.</i>	1299.	<i>Pediastrum Boranum Kutz.</i>	1295.
<b>CoDeM* Demangeonii Mtmg. rt Mont</b>	<b>1340.</b>	<i>Pestalozzia funera v. heterospora.</i>	12<>2.
<b>ColleoH minutissimum Hcrrke.</b>	1259.	<b>Hi-i in</b> <i>Desmaz.</i>	1271.
<i>Coccybe furfuracea Srktrr.</i>	1258.	<i>Phragmotrichum Chailletii Kunze.</i>	1261.
COMO <i>thecium A mpntao-amrn Cor da.</i>	1259.	<i>Phyllosticta Laureola Desmaz.</i>	1266.
<i>Cylindrospermum Demangeonii.</i>	1286.	<i>Protococcus miniatis Kutz.</i>	1292.
<i>Cylindrospira (spiral) Kutz.</i>	1285.	<i>Protococcus viridis Ag.</i>	1295.
<i>Cylindrospira (spiral) Kutz.</i>	1285.	<i>Protococcus vulgaris v. b. pleurococc.</i>	1294.
<i>Cylindrospira (spiral) Kutz.</i>	1285.	<i>Rebouillia hemisphaerica Raddi.</i>	1252.
<i>Cytis. . . . . Montagnei ^fhiwfi.</i>	1229.	<i>Rhizopogon lateolus Fries.</i>	1*75.
<i>Cytis. . . . . Lecoqii i7/.</i>	1229.	<i>Ricci i Ki choffii Huhn.</i>	1255.
<i>Dicranum Sauteri ft H Srhimp.</i>	<b>IS! I.</b>	<i>Seytonema cM-rtjJri tffnegk.</i>	1280.
<b>WApaopnam Crerillei A</b>	<b>1296.</b>	<i>Septoria Equiseti Desm.</i>	1264.
<i>Dineia-jKiHum ^ramineum Ltrfiil.</i>	1260.	<i>Septoria Ficarise Desmaz.</i>	1265.
<i>DiplA:  almla Desmaz.</i>	1270.	<i>Sphaer&gt; 9iiii-i)i Arn.</i>	<b>1251.</b>
<i>Encalypta longinib /r. .1 Schimp .</i>	1206.	<i>Sphaeria hrun^ola fr&gt;w.</i>	1255.
<i>Encaly;uin nbtLSifii]i:i I'unrk.</i>	1207.	<i>Sphaeria carpophila Fries.</i>	1245.
<b>rissiiit'os pniiiiiri'i:!) . I.rut.</b>	<b>1314.</b>	<i>Sniunia tlin*pa Fries.</i>	1248.
<i>Geaster finibrbtos Fries.</i>	<b>1374.</b>	<i>Sphaeria Godini Desmaz.</i>	1247.
<i>Glaeocapsa .Li^ina Autz.</i>	1291.	<i>Sphaercrii LdMsni /Win,</i>	<b>1254.</b>
<b>(irirTimia amxlon /Jr. *t Schimp</b>	1208.	<i>Sphaeria itiiinlf.ili:i Fries.</i>	!^2MV
<b>Haplosiphon lraunii .fIC'.</b>	1284.	<i>Sphaeria Roussellana Desm.</i>	12-Vi.
<b>Ht-ii-liT^Hiiia lupnli Lrreifl.</b>	1268.	<i>Sphaeria sul . . . . .</i>	<b>li&gt;2,</b>
<i>lli'(i&gt;l&lt;T^tli:t "l&lt;:e v. Phillyrea Desm.</i>	1269.	<b>S[&gt;lieria Xyloste i Pets.</b>	<b>1240.</b>
<i>Hypnum catenulatum Brid.</i>	1220.	<i>Stictis exigua Desmazieres.</i>	<b>IS41.</b>
<i>lfvi.11Er1 . Conferva Schwarzg.</i>	1225.	<i>Stictis hysteroioides Desmaz.</i>	1242.
<i>Hypnum crassinervium Wilson.</i>	1226.	<i>r. ivloriti -J' . . . . . Hook.</i>	1245.
<i>Hypnum cupressiforme v. erice</i>	1228.	<i>T(*traspor:i ^Halim***a 1/.</i>	12-KI.
<b>lurum.</b>	1225.	<i>Tremulily exigua Desmaz,</i>	12-r>.
<b>lhj&gt;[iutii llaV'flan' Fi//</b>	1225.		
<i>Hypnura Slecebrmn Lmn</i>	1219.		
<i>Hypnura niiriLiuluin . . . . . ffftdw.</i>	1222.		
<b>Hypanin niiriluliiii Orudi etSchimp,</b>	1221.		



HERBARIUM  
MUSEUM  
OF  
THE  
SMITHSONIAN INSTITUTION  
WASHINGTON, D. C.





ISM. Aspidium Rrainii Spmm. Fl. fu': 1. p. 9.

IN h'ib umbroia Bnfflidiagae nOhm Bfhn xig'., presertim ad ripas

Aspidium, frax senice Fld. ... .. Bregm. Estale.

Aspidia uualra. iini'm/iiii ILC. III, tr Sofi n a\*f\*Urt tm- jkl, n° 1001, cel. Kunze (in Flora

IBifi. U) pcbmuo. id iipidiwn lotoo\* ><, secundum, ad Aspidium

3.9.15 ... D1 ... persinere docuit.



1202. *Aspladram rigidum* Stvartz.  
InWt sax a uiouis Lt *Recukii*Crau: d'.intran) iufassi; 1<sup>st</sup>ate.







1205. *Aspidium alpinum* Stcartz.

*Cysldpicria alliiw* W\*\*.

In saxosis cacuminU U toad\*. L\* Pol: Jurac lept n,n. fertr per astatem.



1204. *Acatdon luinictim* **tfStf.** -fi/n. *Muse, frond.* 1. p. 2\*2.

*Piascu/il* (u)jCJra .Vfflnf\*. *ffr. Et S?h. Br#. ear. fic. I- isb- \**.

In solo srpilloso ah auiumno ad ver.

*Phils!* uni inulicuin collect. nosErx *fist. ix, W 803, Ad Phascum*

*triquelniD] Spnta (Acitiloo iriquUruiu Mfill,) jicrtinci-*







1205. *Tayiom sphcnoidcs ffook.*—*Br. el Sch. Bry, exr. fate. 23, tab. 3.*  
ID (dcis amin^sis sufcbunudis sylvarum Juraisi. (*Ltsqucreux*) \*Esfavc.





1200. *Eiicalypta longicollu* Br. *etScktmp. Bry. eur. fasc, 4, tab. 5.*  
In cacumitH\* inontis Ciiatteron, Juiu>, ad lerruiu lugimus cum uniico Lesquereux. .Esl.ile.





1207. **Encalypta** obtusifolia *Funck ex lrid. Bry. un. I. p. 760.*

*Encalypta vulgaris* nr. *g- Br, ft Sch. Bry. eyr. fate. IV, p. JO-*

*Ad rupes Jura<si, undt Luqvrreux misji. Estate.*



iW8. *Grinimia anodon* Br. et *Schim.* Rrtj, eur. fasc. 2<sup>o</sup>, lab. I.  
Ad rupes calcarius pTopc *Itidelbry* el tiroa *HI rude* Cobeniaruii. Vere.





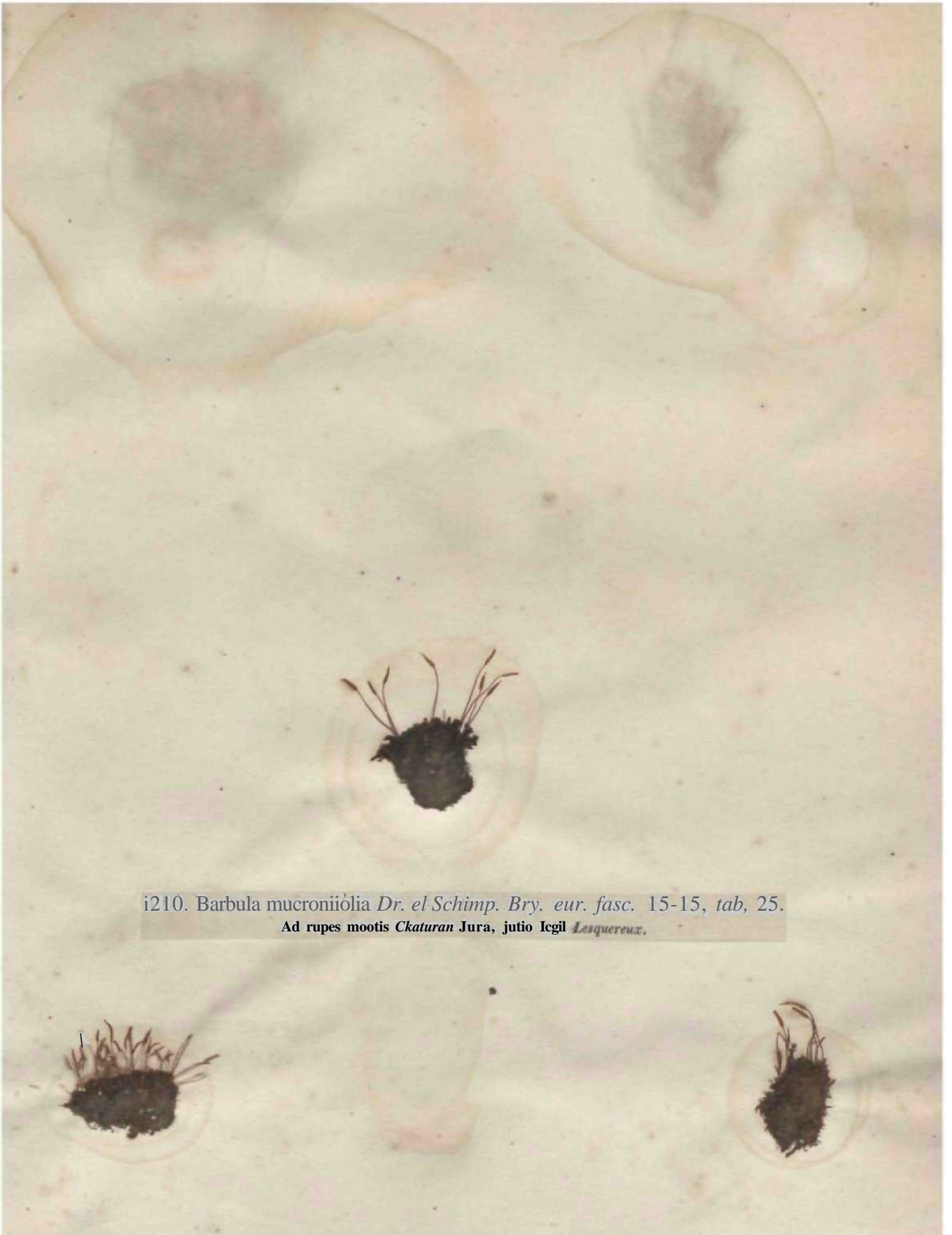


1209. *Barbula iida* Schulis. — *Itr. et Sck, Bry, eur, fasc. 15-15, t. 1.*

In iuris el ad k'Tiim ugiltotao .Vls;ili« el Loihariiipia-. *fen,*  
Non Inn<sup>l</sup> pertinel *aaOn* ll;ii'ni!a rigida fasc. VII, u<sup>u</sup> til 3, soil







i210. *Barbula mucronioliola* Dr. *el Schimp. Bry. eur. fasc. 15-15, tab, 25.*  
*Ad rupes mootis Ckaturan Jura, jutio Icgil Lesquereux.*

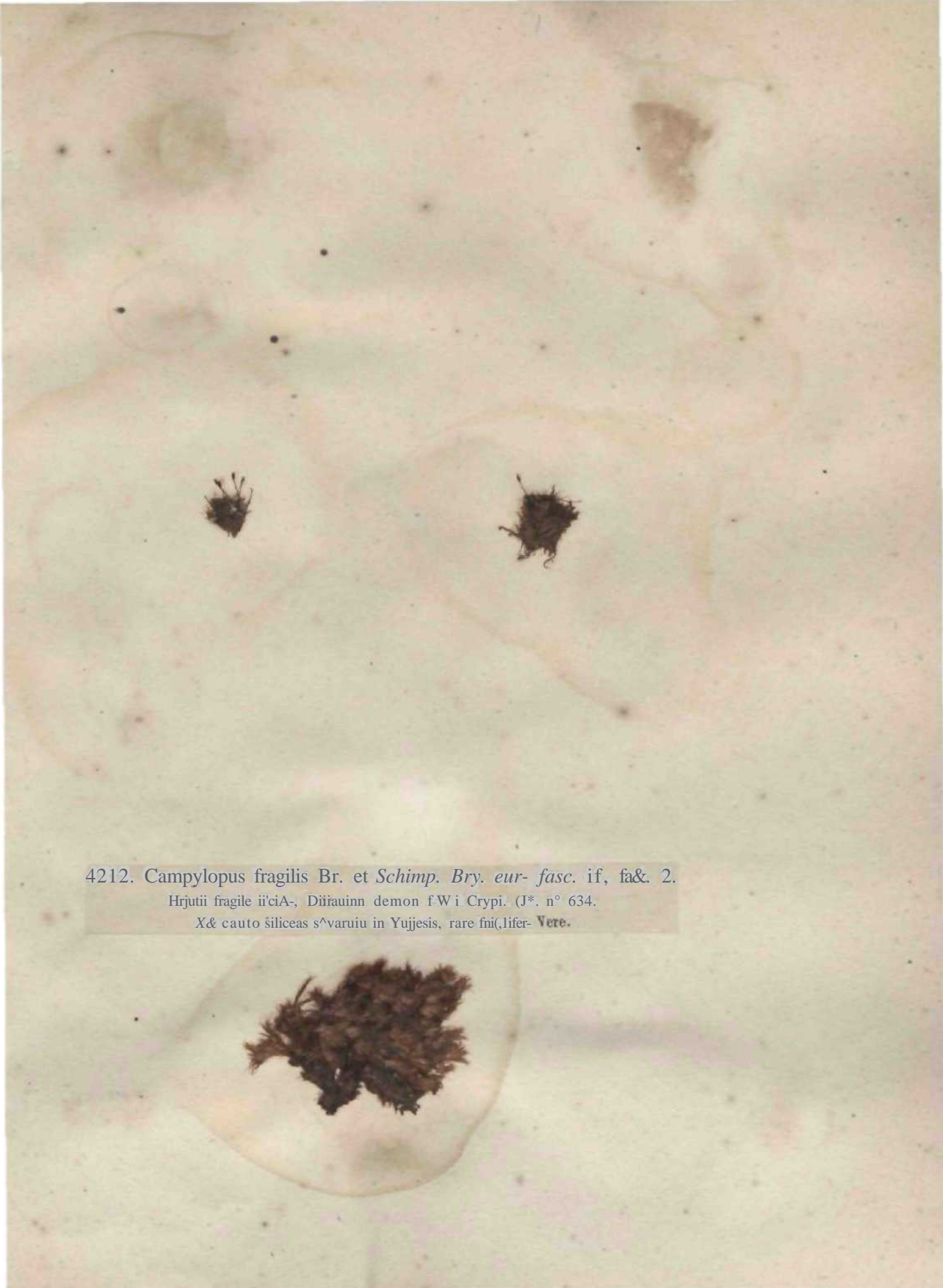


The image shows two dark, fuzzy, circular specimens mounted on a light-colored, textured paper background. The specimens are positioned in the upper left and upper right areas of the page. They appear to be small, dark, and very hairy or fibrous in texture. The paper has a mottled, aged appearance with some faint, larger circular marks or stains, possibly from other specimens or water damage. The overall tone is a pale, off-white or light beige.

12U. *Dicranum Simteri* Br. et Schimp. *ttry. eur. fasc. 57-40, tab. 24.*

Ad traucos Kagi in **moDta** Uohiuxk VogesuruDi, *fütdbirg* Sylvsf! Kigraj. Septembri-





4212. *Campylopus fragilis* Br. et Schimp. *Bry. eur- fasc. if, fa&. 2.*

Hrjutii fragile i'ciA-, Diiiauinn demon fWi Crypi. (J\*. n° 634.

X& cauto šiliceas s^varuiu in Yujjesis, rare fni,(lifer- Vere.







1213. *Campylopus torfaceus* Br. et Schimp. *Bry. eur. fasc. 41, tab. 5.*

Di-T{Hum lli'nnwum Auctorum ex. pane.

ID loriacel»VofewrW JoraMique. Ilartio, apriti.

In aliquot exempteribim t'mc. U, n" J33 cfilletjftajs unstrae hanc

•neciem com DILTIUO OexttOW, iuseruirniis.

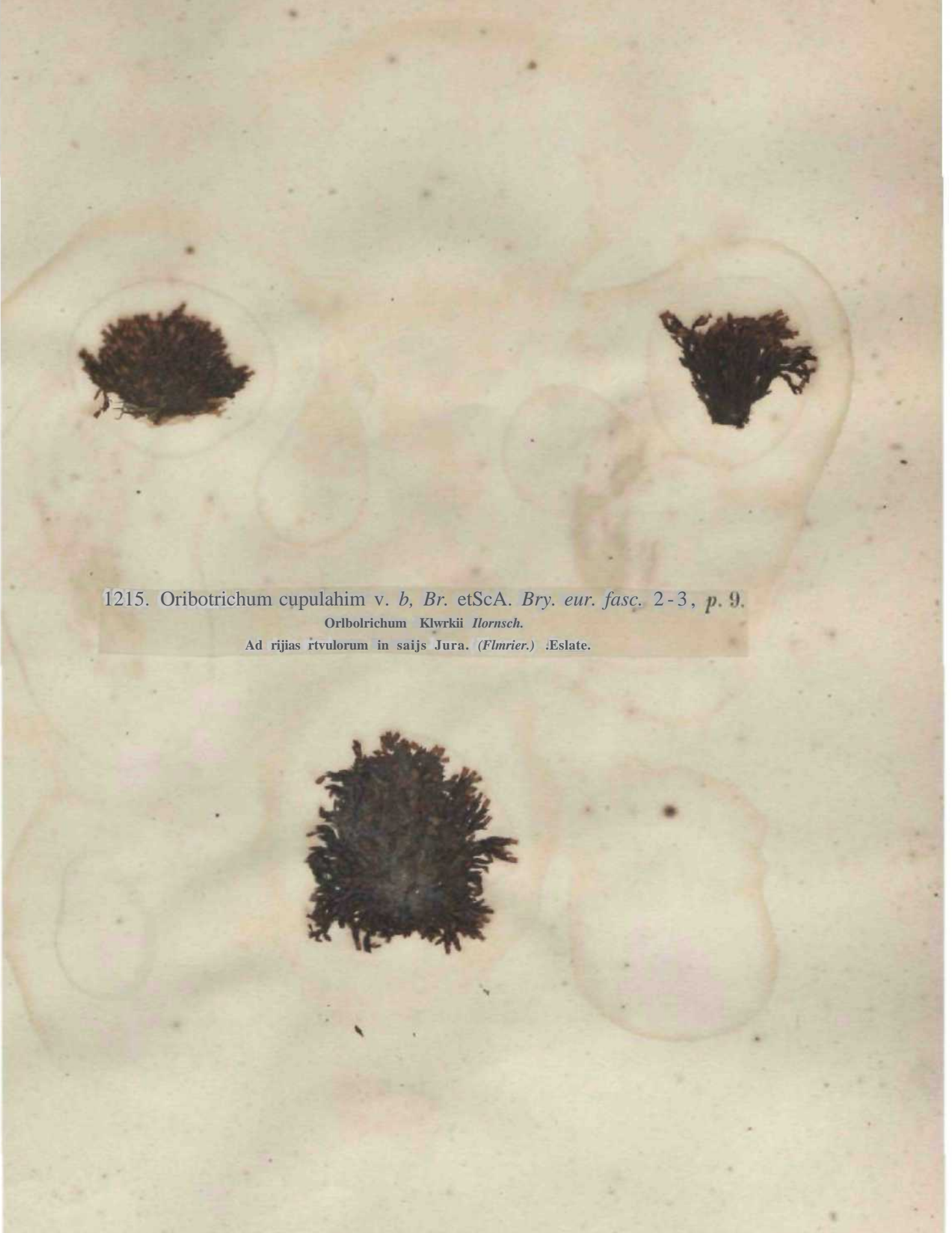


1214. *Fissidens gratulifrons* Brid. — *Br. et Sckimp. Brtj. eur. fasc.* 17, f. 6.

Ad hunc in Islandia in rupibus iioratis, M  
in Cebetutis el Pyrcuxis, usquedo sterilis.







1215. *Oribotrichum cupulatum* v. *b*, Br. et ScA. Bry. eur. fasc. 2-3, p. 9.

*Oribotrichum Klörkii* Hornsch.

Ad rivas rtvulorum in saijs Jura. (Flmrier.) :Eslate.





*me Brvuni bimuni Schreb. -Br. el Sck. Bry. eur. fasc. 6-9, tab. 21.*

*la (tej>r<sub>eesis</sub> humidifl, paMilins, ad iruncos potodoa YogMonim. Vere ac «Mte.*

*Brjuia collectioois noslri fasc, III, Vfi 223 uon ad B. bimum S^ftrrt. scd*

*ad Bfyum pseutloiriquelrum Schwag, spectat.*





1217. [*Jryum capillare* v. *oochlocrifolium* Brid. — *Br. et Sch. Br. ear.*  
*fasc. 6-9, tab. 29,*

•Ad sasa nimbrosa Jurassi [*Lavaux*] LcBfjucreui legil Junio.







1218. Bryum **turbinatum** v. laeifolium *lir. et Sch. tiry, eur. fasc. 9-6, tab. 32,*  
*Itrymii Sdileitberi Sthmag, Mnimu Laifulum Schleich.*  
Ad IdnLcs frigidas rivul^que nmlium CSwsseron Jura; versus scpleutriunem *Utpurenx. Ftllhn-y*  
*Sjhtt Sigr\*, & Bram* observsverunl. Estate.





1219. *Hypnum Hecebrum* Linn.

In collibus granatis circa Friburgum Helvetiae, sterile legit amicus Al. Brückner et  
feriit [?]o vere in Corsica amicus n[ost]r[us].



1220. *Lypmim catenuhii* Brid. *Jiry. m. 2, p. 450.*  
In iruucis arJiurtuJi rupibusque uJis, Jurassi.







1221. *riypnum niiriulum liruch et Sckimp. Bru eur ined*  
In mm\* pntridja Jurassi loco t^a<x c m. nmi L creux W ale l




1222. *Typnum miimitiluni* Medic.

Ad terrain, art\*miiii}tft trnvos in sjWis circa CarYsrube ieg\ cei. *Gmelin*.  
Specfmina noatrj in ^ylvis pmpe Moaachiuin kiia a eel. *Fr, Arnold*.







lii"». Ilypnuin Conferva Schwceg. Iledtv. sp. muse, suppl. % p. 258, tab. 163

Godron.



1224. *Hypnum pallescens* Vilt. in *Brid. Brtj. un. 2, p. 54*.  
In *Mimmo Feldberg Sylve Nigrae ad Abietis iruuto6 vivos nwnuosque jusuie legiraus.*







1225. *Hypnum* Dagellare *fill*, in *Brid. Bry. un.* 2, p. 517.

Ad sai: irroralata prope Geroidsau magn. Un(;)it- Hadeusis observavit Alt. Brau\*. (Sterile.)



t220. *Hypnum crassinervum* Wilton in *Hooker et Smith eitgl. Floi.*

*Crypt. 1, p. 88.*

Ati lapides Jurassi *Ltsquereux*, in innmfic *Donturtberg* *Vogewruia Gdmbel* *Icgemnt* *estate.*





1+27. Ilvjiuuiin Vancheri *Lesquereux ined.*

**Hypnum** Tomassinii *Sendlner.*

Ad lapidos Jurassi prone *Fteurier.* Marlio.







1828. *Hypnum cuprawiforaw* r. *ericetoran* *Srhinp.*

In erice







1221). *Cylindrothecium Montagnei* Schimp. in *Bryol. eur. fasc. A&Jned.*

IMIIIUI iuin tnsiiliisutn *Wont. Ann. MC. iwf.*

Ad K-rrunivel lapidctin tocis aridis Jufuwi, Akalue. Fmetiferojjj rariaiinjein Helvetia occurrit autumnno.







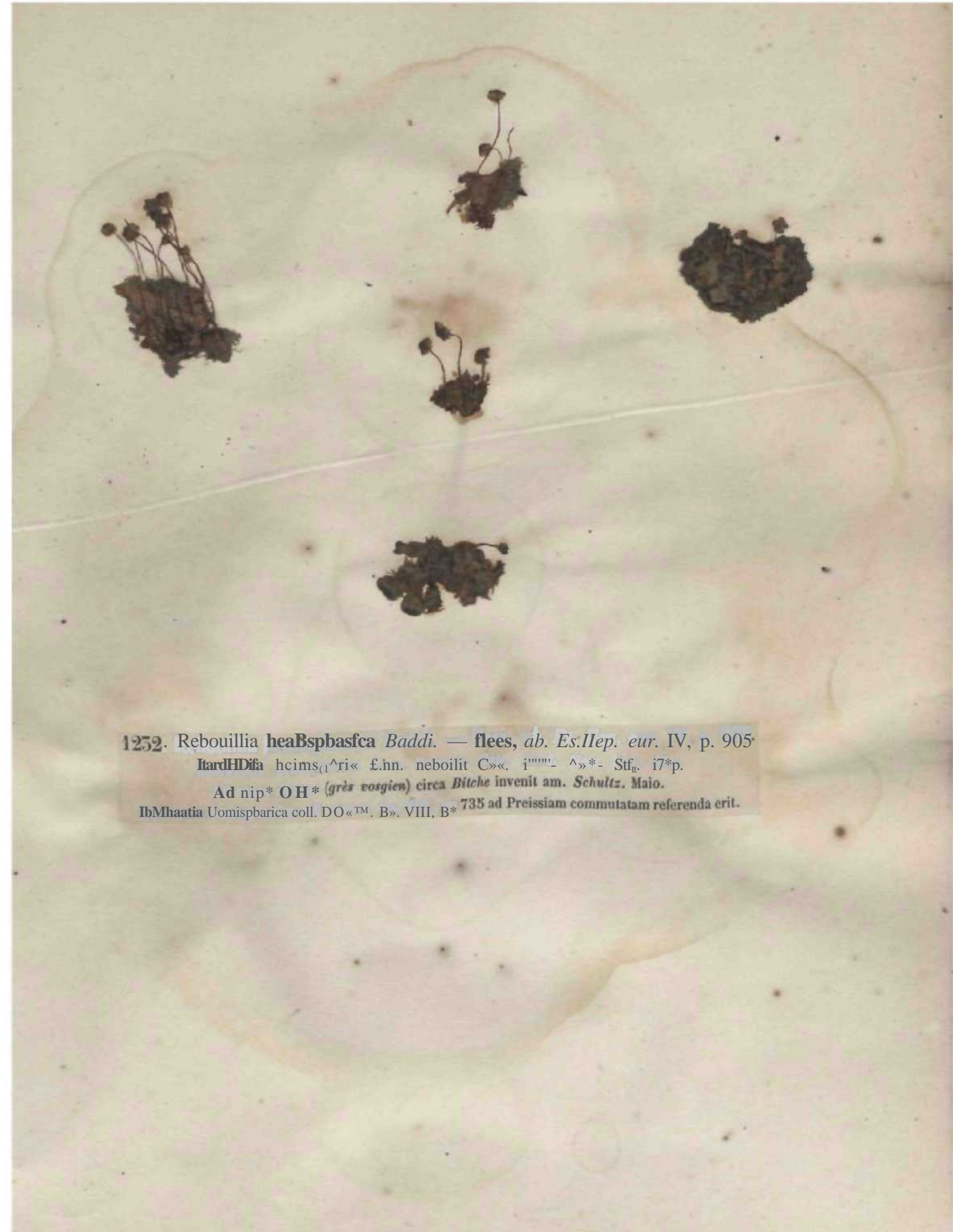
1251. *Leskea nervosa* Myrin.-Br\* et Sch. Bry. eur. fasc. 44-45, tab. 5.

*Ficogotium nerrocom* Schwaeg.

*Ad francos Figi June vtpcr'wit Jcg\*' 4w- Lesquerenz, autumn.*







1252. *Rebouillia heabsbasca* Baddi. — flees, *ab. Es.Hep. eur.* IV, p. 905.

*ItardHDifa* hcims<sub>(1</sub>^ri« £.hn. neboilit C»« i''''''''- ^»\*- Stf<sub>tt</sub> i7\*p.

Ad nip\* OH\* (*grès vosgien*) circa *Bitche* invenit am. *Schultz. Maio.*

*IbMhaatia* Uomisparica coll. DO«™. B». VIII, B\* 735 ad *Preissiam* commutatam referenda erit.



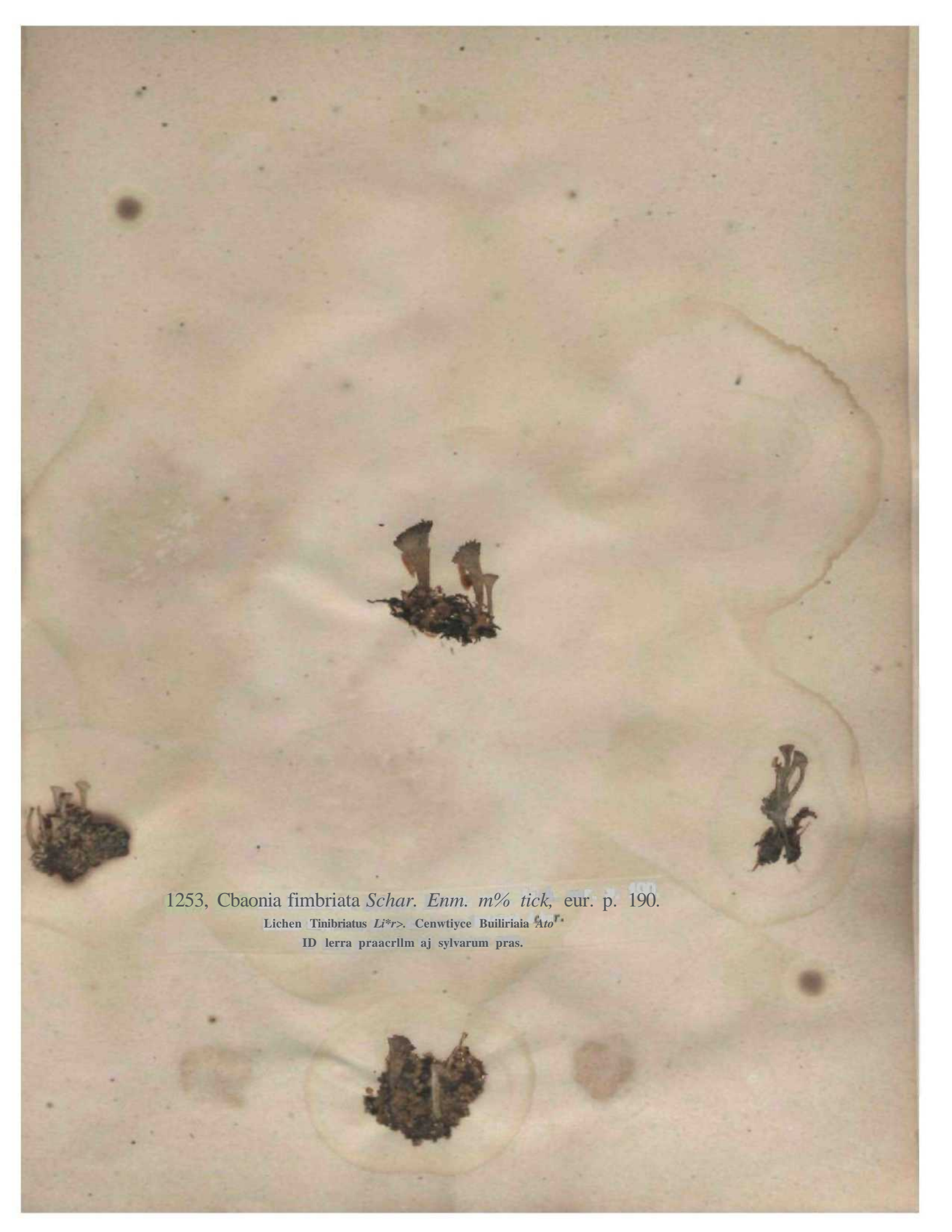


1233. *Rhizocarpus flischoffii* Il'ubn. *Hepat. Germ.* p. 29.  
Ad rupes granitosas deliquescentes prope *Heidelberg*, et *Legavum* unde  
tun. *Guépi\** misii. Vere.



1254. *Parmelia Mougeolii* Schær. *Enum. crit. Lich. eur.* p. 46.  
*Parmelia*\* *canspici* van. *quartzicola* Moug. *Stat. d., Vosg.* 1. p. 422.  
In lapidulis quaruKJs (geologica formationis grès vosgien dictæ)  
per terrain gparsis in motiticulis g<sup>ra</sup> Bruyerium.



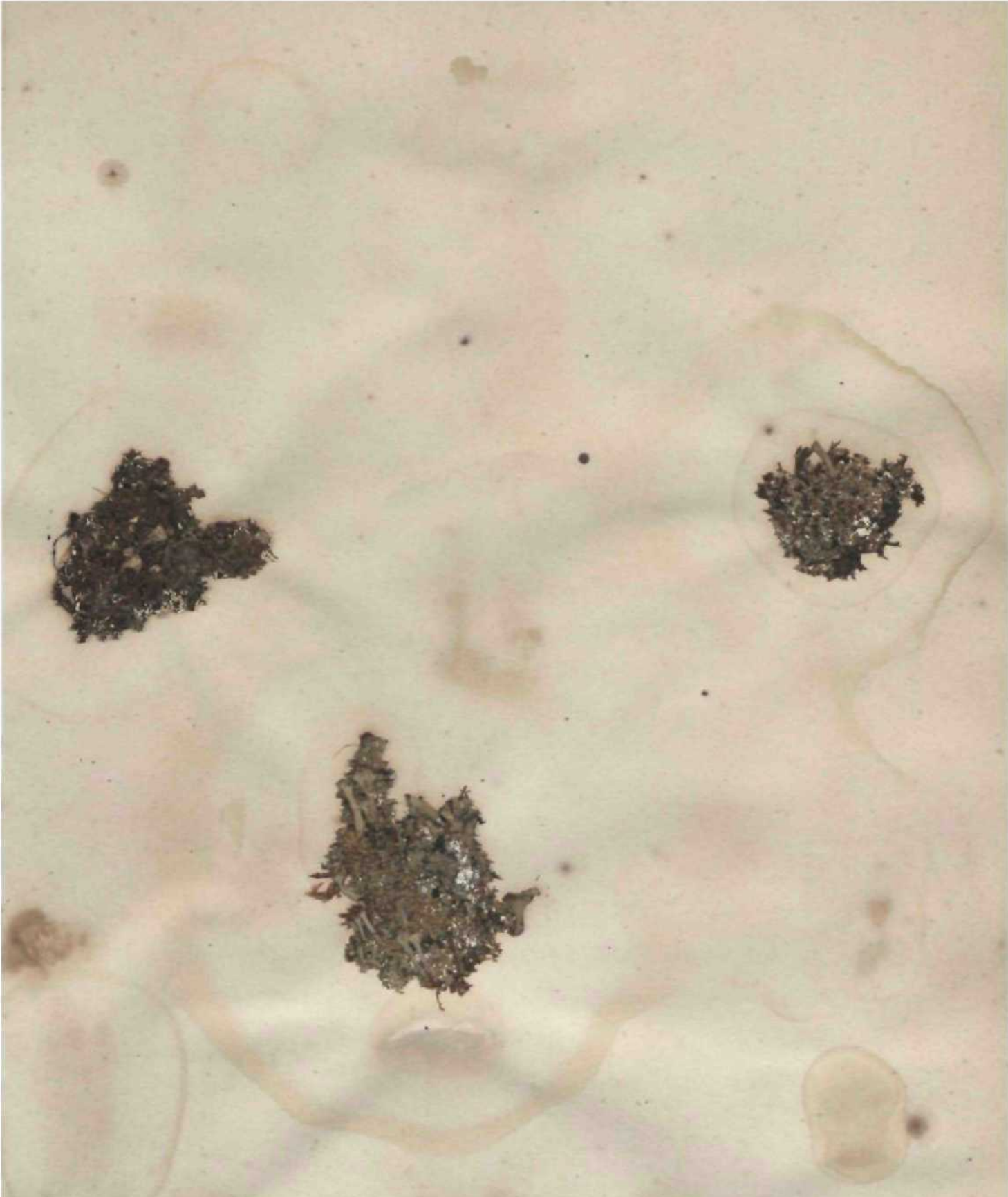


1253, *Cbaonia fimbriata* Schar. *Enm. m% tick*, eur. p. 190.

Lichen Tinibriatus L<sup>\*r</sup>. Cenwtiyce Builiriaia Ato<sup>r</sup>.

ID lerra praacrllm aj sylvarum pras.





1250. *Oadonia neglecta* Flaerke.—Sckar. Enum. crit. Lich, eur. p. 192.

CcDoinyce Pociltum Aekar,

Ad Lorrain, rujK's, nnius in locis aridis.

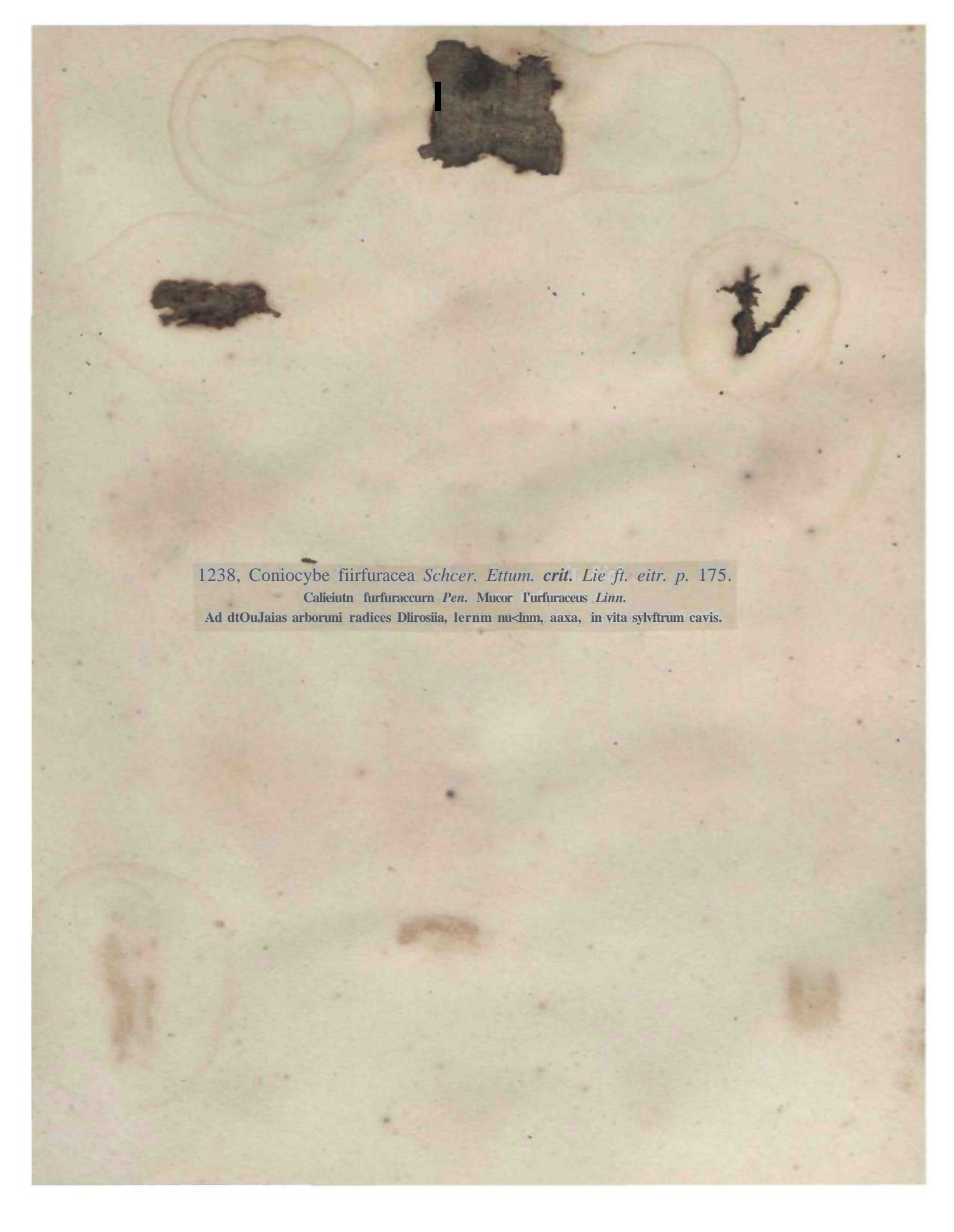




1257. *Calicium nigrum* var. 6. *curium* ScheBf. E«wni, *crii*. *Lich. p.* 169.  
Ad *Quercus Abtclisqtic* inmcos piitresteiies. Tulo anno.








1238, *Coniocybe furfuracea* Schcer. *Ettum. crit. Lie ft. eitr. p. 175.*

*Calieutn furfuracurn Pen. Mucor furfuraceus Linn.*

Ad dtOujias arboruni radices Dlirosiia, lernm nu<lnn, aaxa, in vita sylvfrum cavis.





1259. *Cotletna miroatisginwua Flcn-ke, Schar. Etam. criL lich. enr. p.* 251.  
Ad terrain et Hgna pulrida in ^"ssg ti Cebennis.



t340. Colleina Denaanpemiii *Maug. et Monlag\** *Ann. sc. flat.*, 5\* *vir.*,  
*vol. \%* *p. m.'*

CoHema slygiurn v. b. niimmuloiJum *Schor. En, ml. lieh. tur. f. 260-*  
A<1 ssii *graoito&t aprica simv}* el rorida ppipe *BOBUltooattM ab aw. Demangeon lectum.*





1841. *Stictis exigua* Dtsmazieres. *Ann. sc. nat.*, 3<sup>re</sup> ser., vol. 8, p. 188.

In culnis Jitici qrlcutntt aridis. Ili'tur.



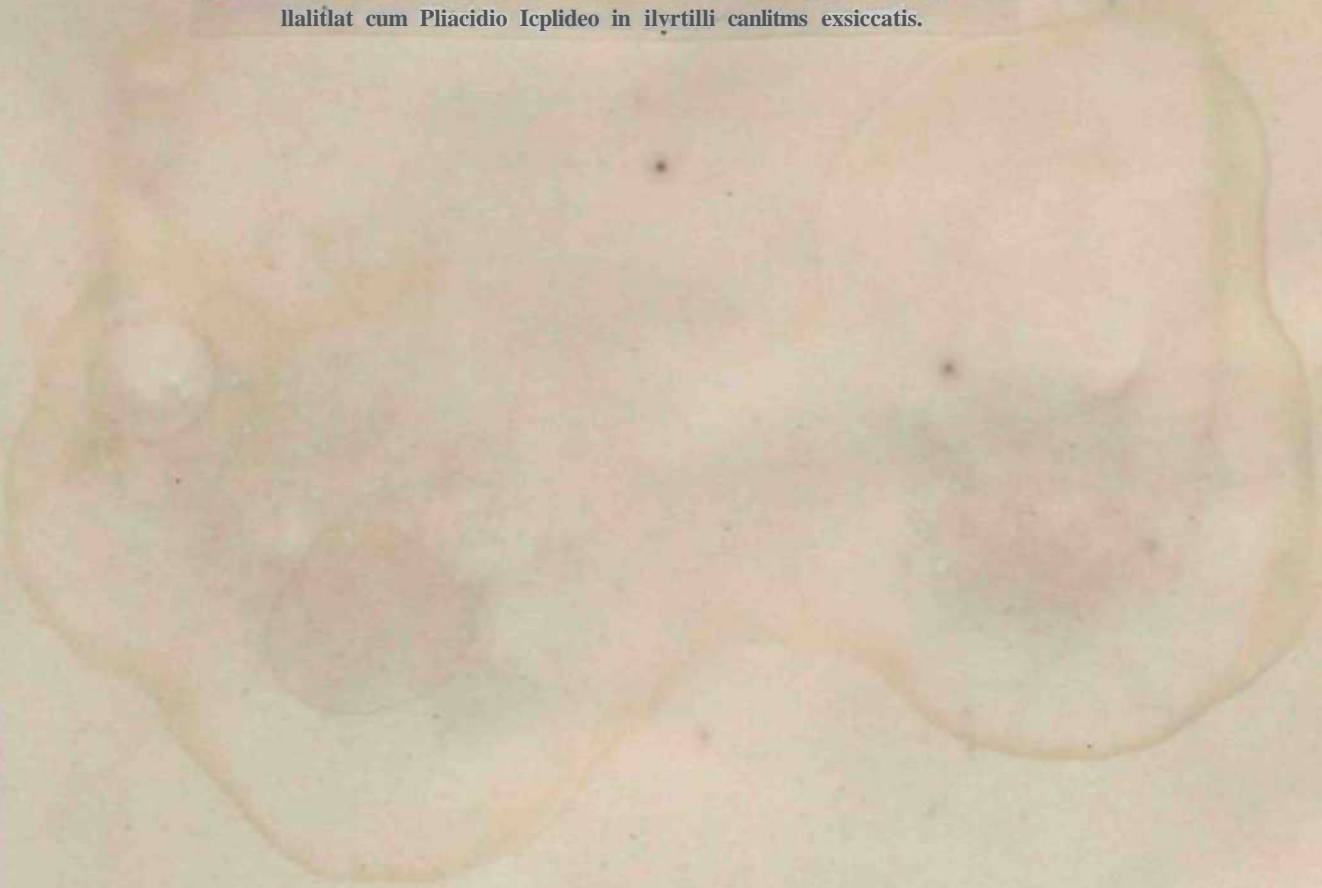
1242. *Sticis hystenoides*. *Besmaz, Ann, sc. nat.. 2<sup>a</sup> se'r\*, vol. 19, p. 365.*  
Legit am. *Desmaxih-es* ID fotiis Caricuai vcre, ct (nmmiiiiicavii.





1245. *Hysteriuni cladophilum*. *Uveittt in Lilt.*

[Perihecio ovalo reguiari uigro-spkridi-iiU<sup>1</sup>, kiln is i tun if) us. disco Jiiigricaale-  
llalilfat cum Pliacidio Icplideo in ilyrtilli canlitms exsiccatis.







1244. *Chaenocarpua Simonini* Desmaz. *Ann. sc. nat.*, 5<sup>a</sup> sdr., vol. 8, p. 17.

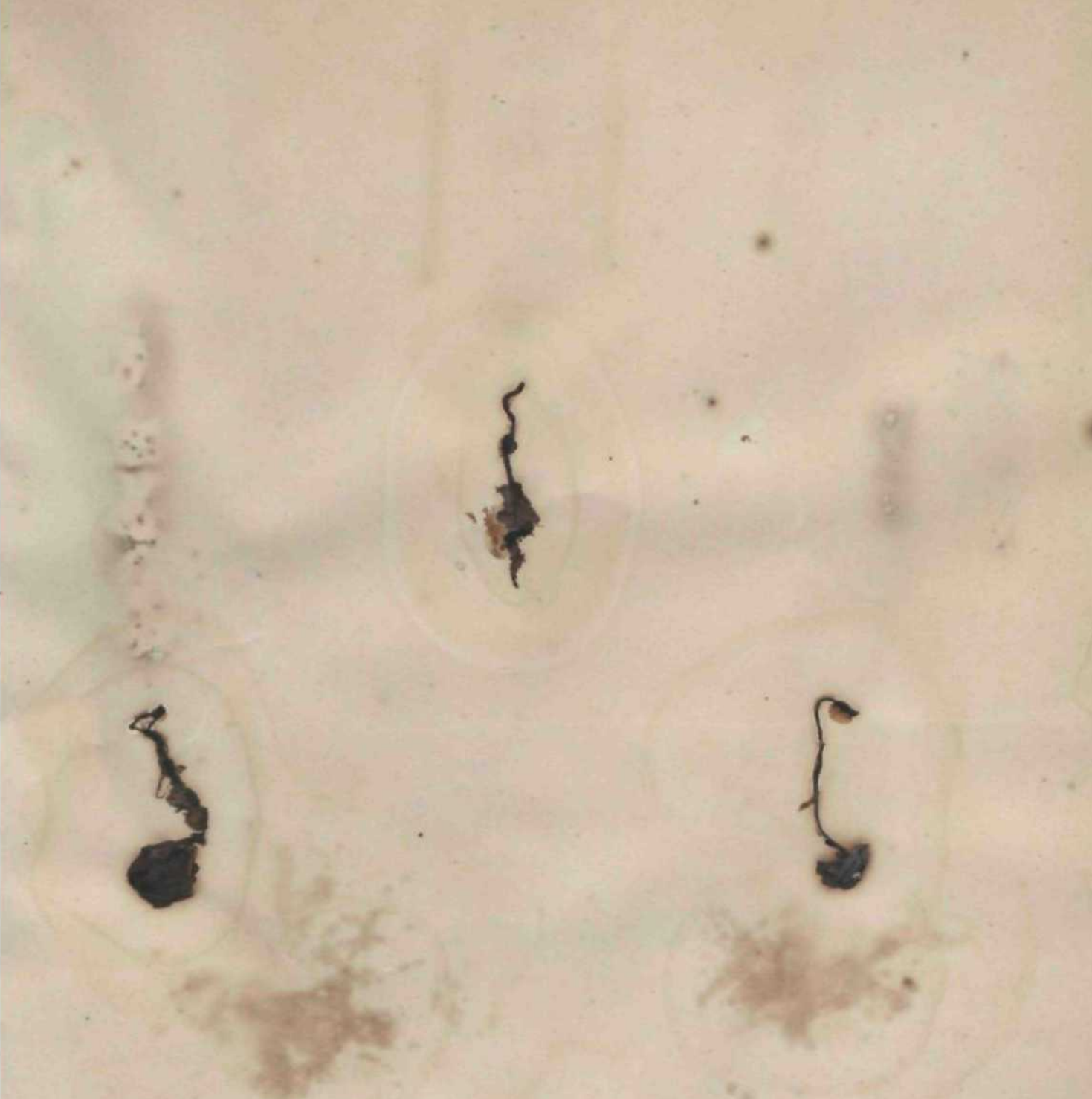
Otwmavil am. ocular. Simonin nance hints, in cella sua ail imam Toruilu oleo imbibitam.

An a Chxocariur sti\*»o *Ribni*. quocmu stinlliUidincm masimam ttabcl ex iliclis eel, *Léveillé*

sal rftstlncla if «d «? De frutiifit-aiione a «l. Acrautitirtf dc\*crij):i a&quedn ioccrit simws.







1245, *Sphasria carpophila* Fries *Syst. myc.* 2, p. 328.  
Ad pericarp! a Fagi, locis sylvanim udis projecta.





1246. *Sph;pria sufl'usa Fries Syst. myc. 2, p. 399.*

In Minis i-iiinrlüi-s Alui (^OillMBie, Atitunmü.



1247. *Sphaeria Godini Desmaz. Ann. sc. tutt., 3\* sfr., vol. 5, p. 49.*

*Ad culmos siccos Aruudiuis Pliragmitis.*

*Cum Sphyria arunjinacea Sow, Stir, crypt. Vog. rim. fat. XII, a° 1163. aliquotis\*  
inseruimus, utiimen diffiit nuilo oculo, liretlis brevioribus (jriwisque. Conf. Dttmai. f. ''').*



1448. *Sphseria ditopa* Fries *Sijst. myc* 2, p. 48t.

Ad raintis eraorluos Aloī glu(luos.T.







1249. *Spbaerra STylostei Pers.* — *Fries, Syst. myc. 2, p. 487.*

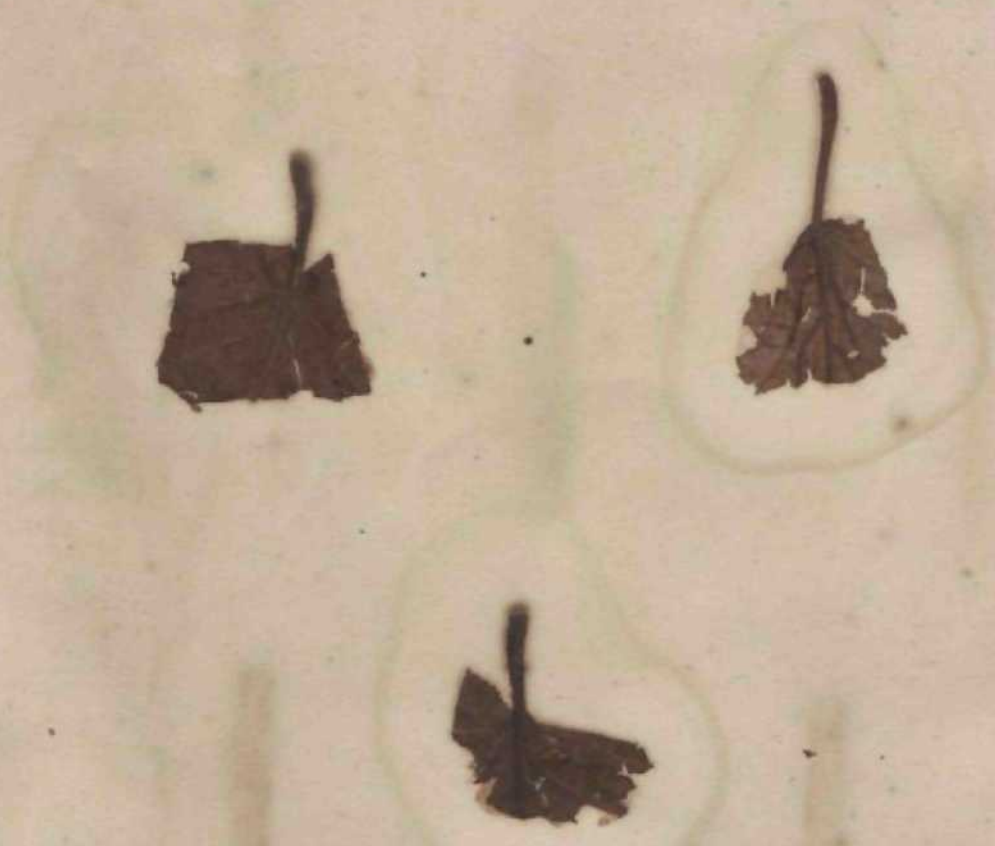
In ramls cmorUis Lonkerat Xylosci.





1250. *Sphseria mamillana* Fries Syst. tnyc. 2, p- 487.  
Ad ram us ensirtalos Casiaoeae, Gonii Ageris.





1251. *Sphsria aincna* Nees. — *Fries Syst. myc* 2, p. 519.  
In iit-iolis foioium einortuonim Coryli AvellanaJ.





1252. *Sphaeria subradians* Fries Syst. mtjc. 2, p. 525,  
Ad r.itu emortua CemxSiria Hiajalifl.







)•/

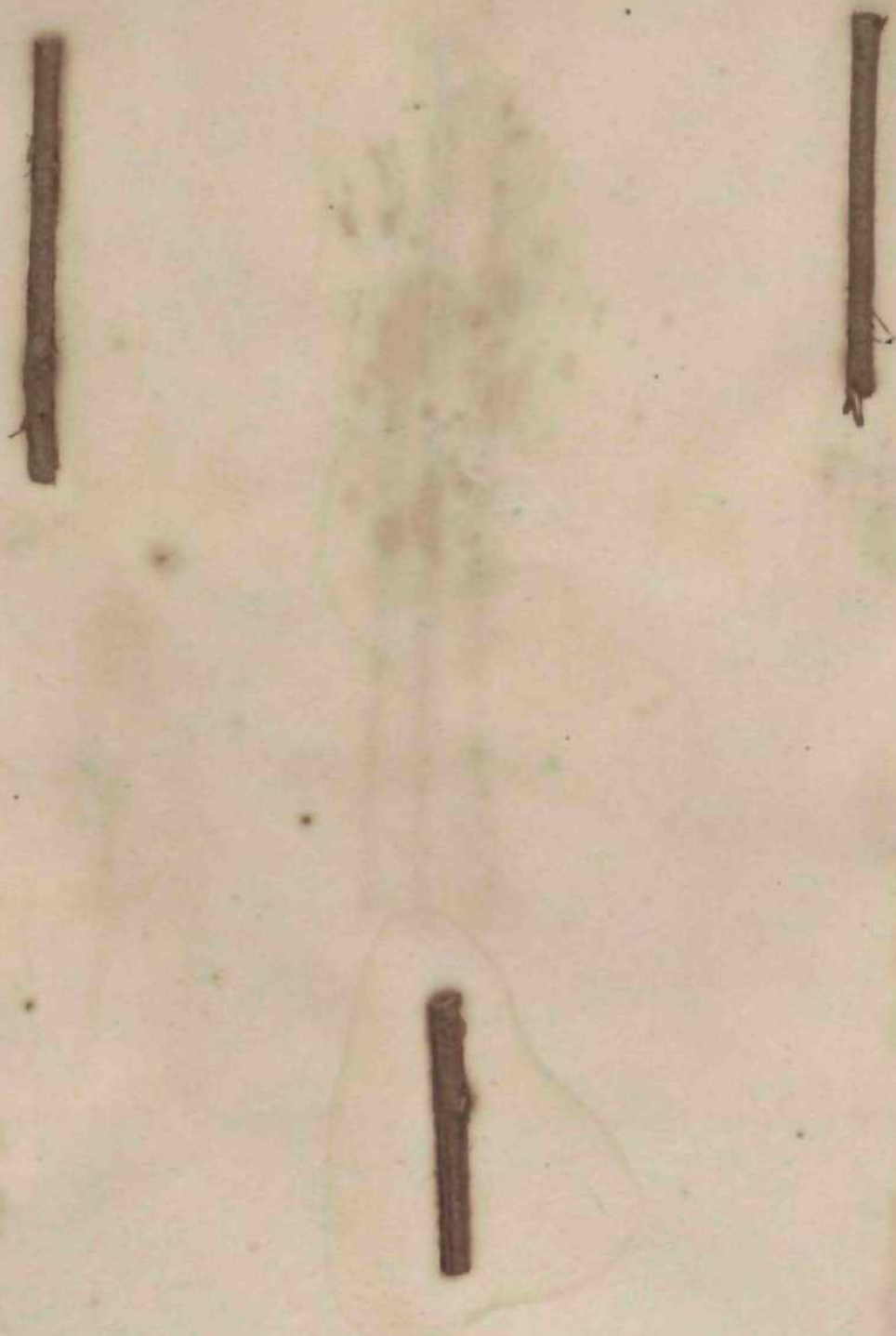


1253. *Sphaeria bfnoneok* Fries Syst. myc. 2, t. 525.

Ad bib exaiecala Ctmvaltori;v majiili\*, Kpipaciidis latifolisc.

*Sphaeria brunena* rinsin fa«, X, D° 9V0, II0U ad h>ae spcciem referendj, sed  
ad Dothideam tnehmplacajft ftrm&i. itw. tt. \*<U>. 3\*jfr.. vol. 11. p. 331.

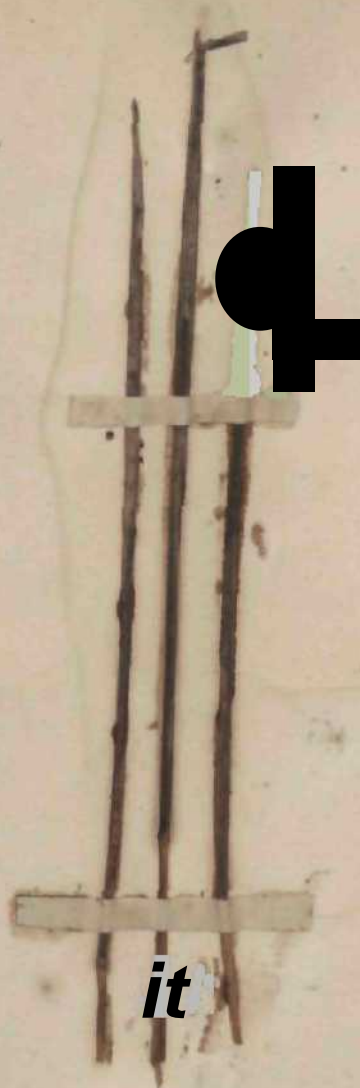




12. > i. *Sphueria Lebiseyi* Desm. *Ann. sc. nat.*, 5\* *sfr.*, vol. 15, p. 144.


Habitat in rimis exsiccatis Atrix campsisiris Negundinisque.





1235. *Sphajrin Rousseliana* *Desm. Ann. sc. nal., 5<sup>e</sup> \$fr., rot. 11, p. 535.*  
In vagijtis Phlei Ikiduneri. Excmptaria ab am. *Roussel* accepimus.



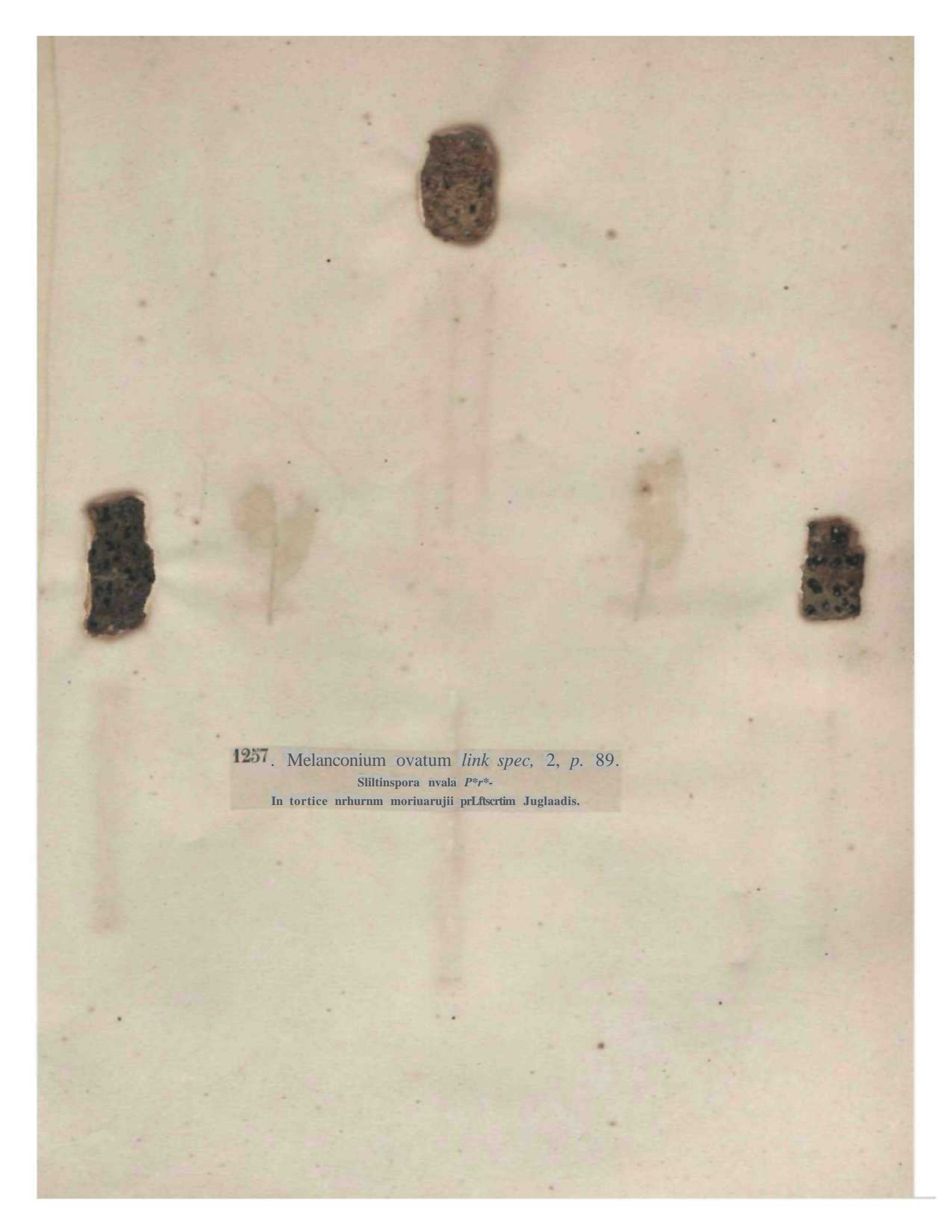


1256. *Microthyrium microscopk-um* *Desm, Ann, sc. nat., ^ sér., vol. 10,*  
*p. 158, tab. U, f. i.*

Ad folia diatocau QMietu, <sup>18</sup>S - Phillyrew. it\* horlis el ad  
squamas Krabiloran t&fcis wctss in sylvis.







1257. *Melanconium ovatum* link spec, 2, p. 89.

Sliltinspora nvala P<sup>3</sup>r<sup>3</sup>.

In tortice nrhurnm moriuarujii prLftscrtim Juglaadis.



1258. *Melauconium sphaerospemum* Link spec. 2, p. 91.

SilUospura spiwiwspefiJia Pert. #

Ail culmos aridos Arundiim Plua^iuiiis. Hieme.



1559. *ConkHheehun* Ainentacearum *Corda Icon. fung. torn. I, p. 2, f. 36.*

M<sup>l</sup>Irtuioiriiijii) coRglomcraUini *Link, tp. 2, p. 92.*

lo raiuis Sa(ic\*im emortuis.

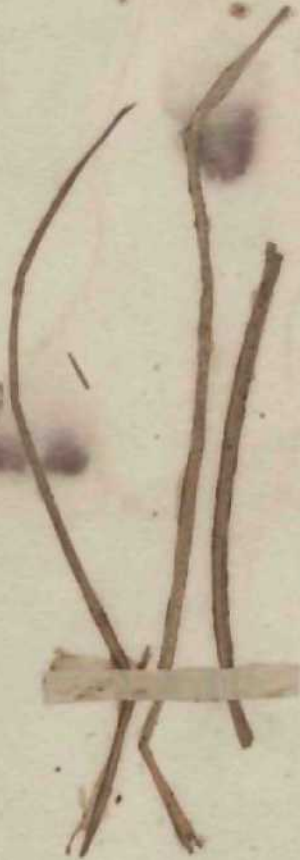




12110. *Dinemasporium gramineum* Utmil. *Cotid. mt/cot.* p. I:22

*Exdporh gnminum* Corda *kon. fung, 'i, ]>. -in, tab. V. f. 79.*

Ad mule\* fulia'ie {irautiium 0&Sicca(oruin. Vi^rc









1261. *Phragmotrichum Chailletii* Kunze myk. Hef. 2, p. 84, tab. 2, f. 4.  
In squamis strobilorum dejectorum *Abietis excelsae*.





S

1262. *Desmoulinia fucrea* v. *b. heleiwspona* Desm. *Ann. sc. nat.*, £ srr.,  
vol. III, p. 310.

M Toia cniortua Cupre&oruni, Juuipm cainmnnis Tliiv;iruroqti\*; >» hortis.

Sject nit us deitJI am. *Dtsmaxitru*.





1265. Ncoiiiospora Caricum *Item. Ann. x. nat., 2\* air., voL W, p. 546.*

*Sphitfia caritijia Detm- Pi- trypt. r«. «» 717.*

Ad folia stcca Caiicum pendula; ac ri»ariac-





12(J4. Septom Bjaieseti *Hesm. Crypt, ex&icc. n' 170G*

Liljwldb & jiiisfli *Uunaz. in\*, tt. tw(.. 3« rir.. vot. 8, p. 119.*

In EqnRU *tnesai aaiiao lauguescenti.*







1265. *Septoria Firariae* Demaz. Mem. soc. Sc, tea, de Lille 4, p. 8.

In Urdquii (olioruni pagim, «i»m iu pcliLLs l'icariK. l'rimo vere.







1266. *Phyllostachya laurocola*; *Beswaz. Ann. sc. nat.*, 3<sup>e</sup> ser., vol. 8, p. 118.  
Asplenium **LAIWIS** Chevall. ?  
In *Mém. Mus. Nat. Hist. Paris*, t. 1, p. 118.





1267. *Cheilaria Arbuti* *Dcsmaz.* *Ann. 86. nat., 5\* s<tr., vol. 6, p. «8.*

*Dothidea Armbi Spreng. ?*

*Ad paginam folium suptriwtra Arbuli Lntdinih sub dio a[md uos in hurtis odtte.*

*Hienc.*



1268. *Hendersonia Lupuli Uoeili.* in *Lilt.*

Ad caules Lupuli culii jiosi iynssem simbilwum **nmuroo** congestos **putrescentesque.** Hieme.

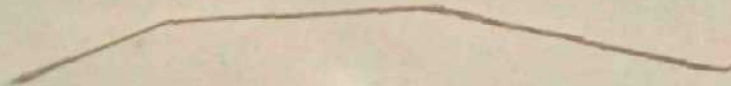
Sporis tri-quadri seplaiis [mulum recunii,







126(,). Hendersonia Olera v. Phillyrea Desmaz. Cnjpt. exsic n\* 1S8!)-  
Spiiscia Olese ». \*. I'hillyrta: A/o«(. Jnn. re. w\*lp, 2\* \*fr., to(. 1, p. 342-  
Kji cl hyH)jilylb I'billyrna'ittu in litirLis I'uiuituit. K\i:uijilJrij hue reposita  
aL aittio) Gui'l'in andegavensi accepimus.





1270. Diplodk strata *Demaz. in Hit.*

*Sphaeria alata* *Dcsma. Ana. jr. tint., 2\* J^r., oof. \*7, p. 103.*

Ad riuins rimi *hictac dtjectos.*



1271. Phoma Lingam *Dexmaz. Ann. sc. s#., '3? \*fr. J vol. 11, p. 28f.*

*Spicria Ling™, To & Fin?. meM. 2. p. 5i, Ut. i&, f \*2e,*

AO ltrJSSic.i! aleracca: cuilcs iu a%is imrLisjiiie cisirralos. Verc.

*Pshmrriptis specks (pum miit Siii;ria olfMa (spltsmliis semper fiynsu bmwnbj Siiirp crypt.*  
vogeso rUcu. n" 107C, aliquoicis coitrudinms.



1272. *Cytispora Mougeolii* Utehl. *m* Lilt.

« Conceptaculis gregariis Oblusis sul^obosis, ctinlis pyrosis iilus jullidia cnlmiu'h destitutis ;  
» osiolis er<sub>0</sub>[upfi]iibus)imli<i>4pilbiis|i(>ro pertusia; dnois luicwicuibq; siwis eUijUko elongatis  
u reclis oWsis. » L,Ip. I, C.  
AJ faciem imertnaj coriicis irooruni Abielts peciinil\* aWiLeet locouiiibrow)^ suffitcuio asservalee.





1275. *Tremula exigua* Desmai. *Ann. sc. nat.*, 5\* ser., vol. H, p. IJU.  
Agriurn »(ri)virena Frin? tx Detmazürts,  
Ad lamos SaitiLiiaiuiii wopatii emoriuos, promiscue cum Splmxii Spartii Stet.



i27i. *Geaster fimbriatus* Fries *Sysl. myc.*, 5, p. Hi.

Geulm) itiuU'inm VHutL

Ail lemra in tyivit pneswtliB pineiis Loiliariiigiw ci Albat««. Autumnno.





1277. Rhizopogon luteolus Fries Syst. myc. 2, p. 21W.

In pinetis sabulosis sylvaticis. Estate M wloyno.

Specimina nostra 3b aii) -o BttmaxKTtt accepimus.







1276. *Melampsora betulinum* Desmaz. Crypt. m. n<sup>o</sup> 2017.

*Sclerotium betulinum* Fritt; *Perisporium* D.J. teiilinuin prorsus Jispamii Fp<sup>w</sup> Summ. 2. p. iiii.

lit paginn Liferiore foliomg) BeMts aB« ileridinim, Verc.

AJ hoc genus retulii *btmanerts* Stlcrotii, atc,|at«ra u<sup>v</sup> 883 el liorbarnm n« 1W0, <|ullei:Uuiisnoslmr,  
at *Léveillé* inter Ci-edjiiicos Jubias JocariJ\* <famp«ra. t. Aw. te. nt/(..3\*sir., uof, 8, p.375.





1277. Chara aspera Willd. — Kiilz. Sp. Alg. p. 521.

In lorfaci'is Jurawi »slat<; Iegil coiuiuunicaviinoe sua. Fodet.








1278. NiteBa sjncarpa K5fa. Sp. AI3., /> 3U-  
Chara Byucarpa Thuill.  
lu aqvu AfeWi\* « Brisgovize.





127J. Merismopodia vidacea K\Uz. Sp. Alg. p. 472.

A<sup>^</sup>Dteudluu viobLi'iiiiu tie Brvlti.

In :uliiis quietjs circa Fribur<sup>^</sup>mn Urisgnvia', insiar tfoBB naVmiis rubra: CUIH trulla  
primbm cucta, duu ope cochlearis Ibrvuli super <-h>iian cffiwa,  
legit a raense aprU ail juliiiiii, et beni<sup>^</sup>ne conuntimcaviiAi. firnun.



1280. *Scytoneraa cmerem* Menegh. — Kütz. sp. Alg. p. 503 et <sup>(ab)</sup> phyc. 2.

17, /- I-

Al mitt\* a 15m cum Knwlypia rtrepk«I«i \*« A Karlsruhe mense oclabri. letft UR. Al. Brau».


Oiim ad muros pr^pc Jfttt/feMid ^ tinndnn otecrvavii intfefOHB if.

el sub m>uiiie [>rilosi]>lionis juliam disiribml.

Braun



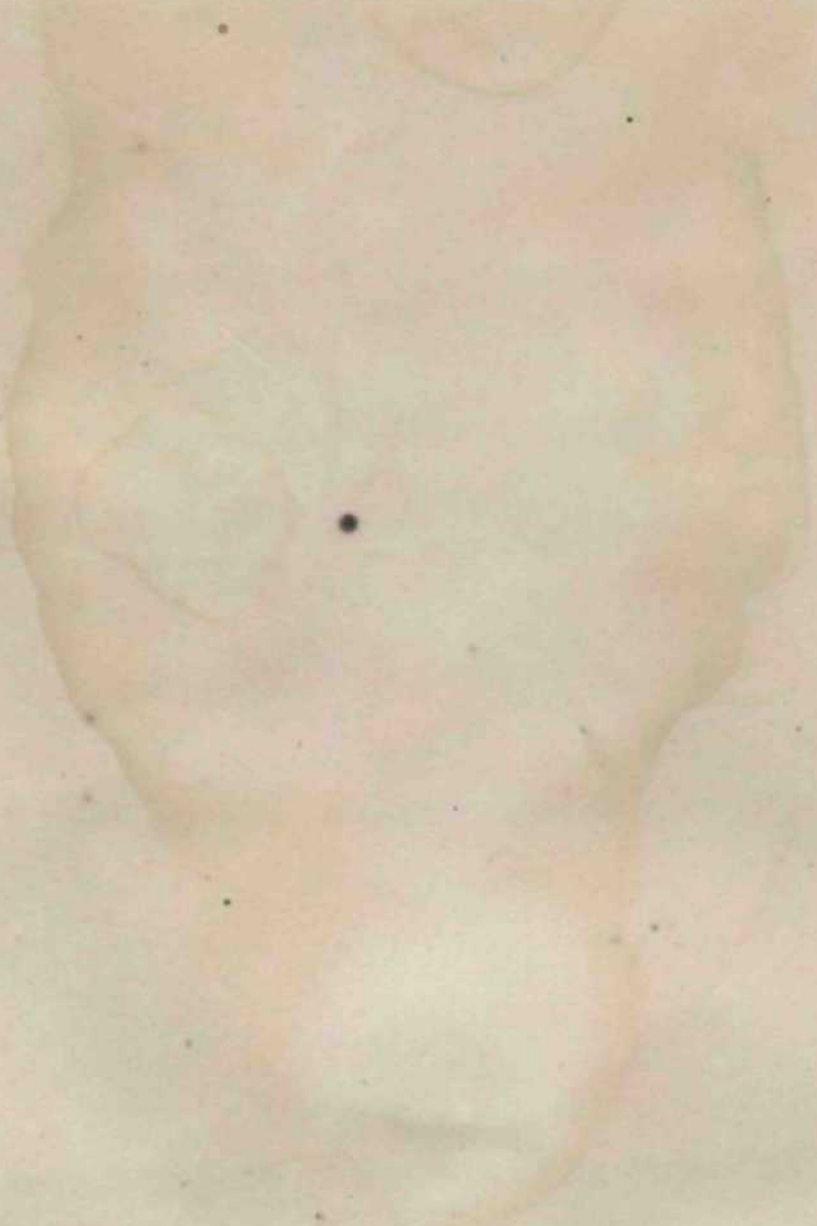




1281. *Nostoc parporascens* Kittz. tip. Atg.p.TAM et tab.phyc.%, 11,/" . 4.

Ad ripas rtrakmin. sponkeBt cwm Mwiiia /onuna, (trope

Romarimontem V(igtsoi^Uiii% ^il aniii'lis Demangeon.







1282. *Nostoc verrucosum* Vauch. - ●●\* *Sp. Alg. p. 300 et tab. phyc. 2, 9.*  
*Tremella verrucosa* Linn.  
Ad lapides in rivulis pratorum Brisgoviae observavit noster Braun: exemplaria reposita  
ab filio de Brihiun proveniunt.  
Distincta species a *Noctoc verrucoso* Stirp. *Cript. n° 798.* Fronde  
quæ solida levisque in *Nostoc* collectionis nostræ: quamobrem  
hoc ultimum, *Nostoc Mougeotii* (Kütz. *Sp. Alg. et tab. phyc. 2, tab. 9 - M ) S 3* lutatum fuit.



f2K>. *Nostoc gyninosphtfricnm Kützi, Sp. Alg. p. 290 et tab, phyc. 2, tab. 11*

In labelUs aqua repletis horli bolanici friburensis DHsgovhe loU unstaic.

Junius ad parietes lit belli aiHircrens, posiea »alans. Lente dessicalum maleriam purpureo-  
violaceam ut hi Hiomiidio liudorio *Killz.* acre osiendil, at celeriler essiccauni hoc  
pbcuomenau DOU **amplius** videndum. *Ex\* AL Broun in Lia.*







1384. *Hapalosiphon firauuii* Naeg. — *Kütz. Sp-Aty- I. 894.*

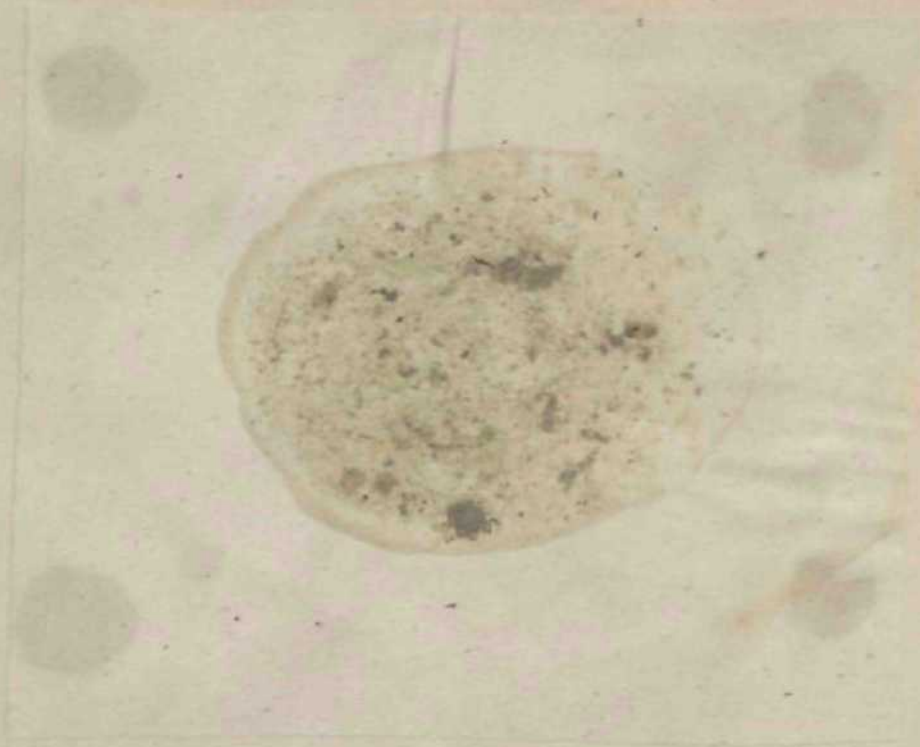
!Q sUgnis circa llQm»nin»nio,ui itgU «s\|aie am, P^woiS<sup>TM</sup>n et in  
lorfaceis Sylvae Nigra observavit am, Al. Bratat.

*Polypodium*

*Kütz. 222. phyc.*



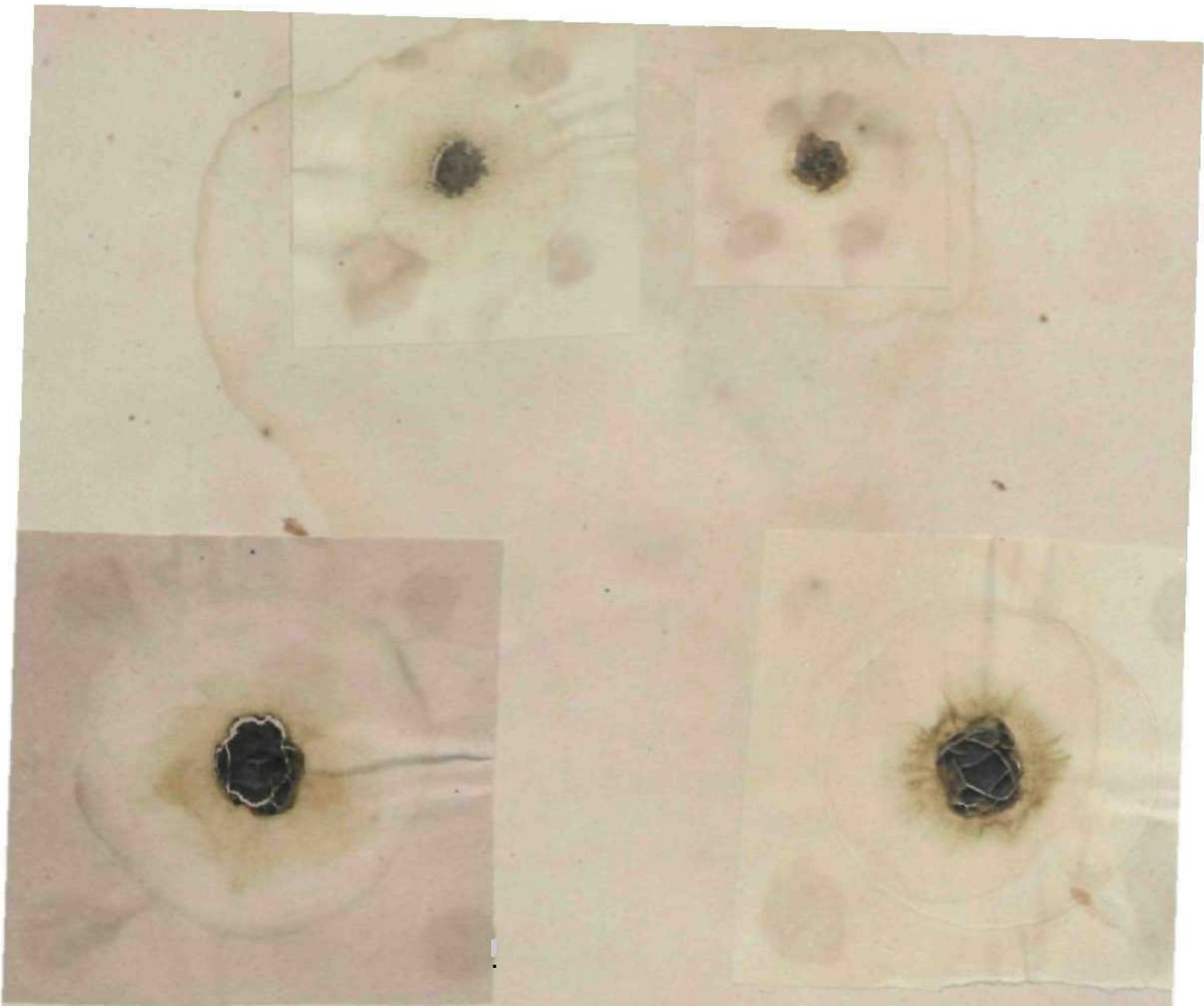




1285. *CyUndrospernium spirale* *Kiitz\** *Sp. Alg. 292 et tab. phyc. lab. tyl, f. 5.*

In rivulis praiomtn circa Krihurgum julio ab am. *At. Braun* Icctim.





1286. *Cylindrospermum Demangeoni sinocum.*

In fossil circa fiamai'iiiiifOJn ab am, *Demunijcun* upstate ot .kutdtiuo ol^enatura.

*De hac* pu)cliri: i speore tifquctM fficrif, alg^la^orufj pr^diutn roganms; nam (res atii *quatuor*  
*e per'itissimis*, vel ad C. granuJifcrunj re! ad C. Ualsii, ve( aff *Sph;erozygam*  
*h)si\$nem dabtianter retulerunt.*





1287. *Lyngbia bicolor* AL Braun Mnspt.

In fossis praiorum lurfosorum BrUgoviae, pncserlim ad laiera fossarum intra carices,

**Hjjiinmi'ir lluiiantcm. Julio.**

« Triehomata proslrata, in ttrataa expuaoa fusco atmm impl><ta • «°R la sinjphcissima  
 • —Js-infflini. crassa, joniora icruginosa, adulta ex olivaceo ftiscescjua, lat< vagiuain C(msi,jf-U(-  
 „ aiicirtVia, arliculis arcllissimc coaiigi.is, dianieiro iriplo-quintoplo brevioribns, p.mclalo^affliUU.  
 . Cellule imerslitiales reliquis paulo lonpiores, depmso^lobose, P««We hueola- vd cameo,\*.  
 . Vagina cnssitHods, firm\*, inilio hyaHaas, dca.,umlvteoHIBCMMUIM. . Ea ii: Br» m » « i -

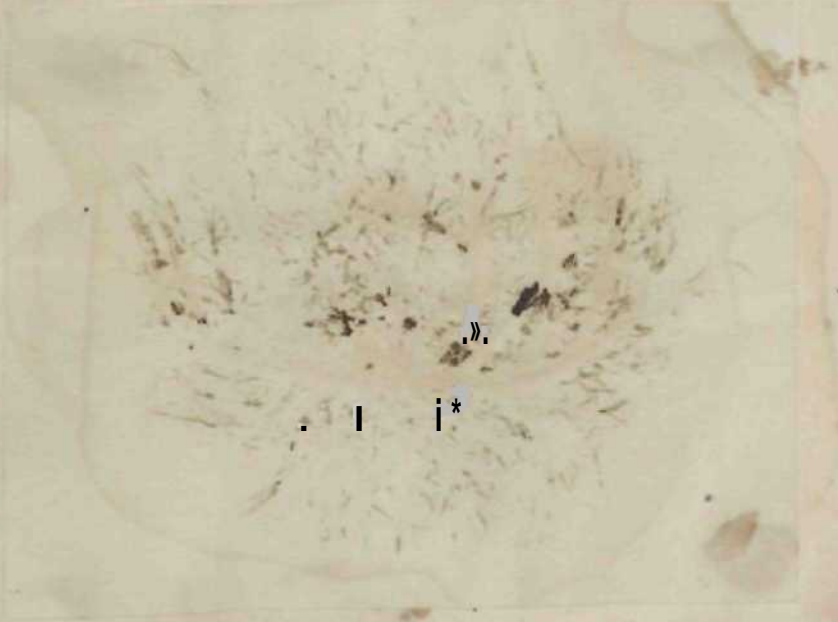


1288 Osdlari.: princeps *KTitz. Sp. Alg. p. 2-*»«/ *tab. phyc. 1, tab. 44, f. 1.*

Oscillaluria jrincep& 1<W'

Demangeon.

[o bnU cit« RowttiWHit™ wltép\*JK\*»» am-



».

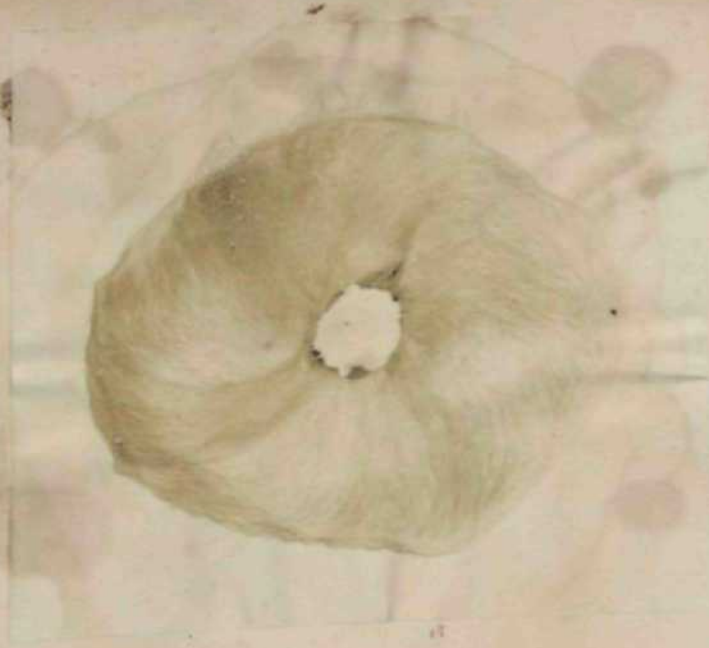
. | i\*



K



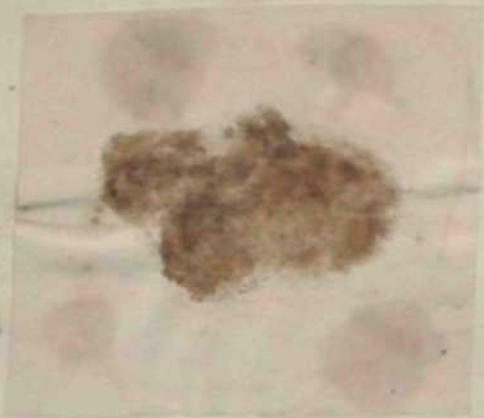




1289. *Oscillaria mucosa* Hassall. Maria Fnelktrii m\*. Sp. Afo. n. 246 ri tab. phyc. I, tab. 45, f. 1

Invenit dFC\* RomirinWiiieH. juUo d maguifice preparavit am. Demangeon.





1290. Teiraspon **getetmosa** Ag. — *Kñls. tab. pkyc. 1, lab. 28, f. 2.*

*gelatinosa* Vauch.

la aquis staanaaiibus. Vcre ac æstate.





1291. *Gloeocapsa Magma* Kütz. *Sp. Alg.* p. 221 et *tab. phyc.* 1, *tab.* 22, *f.* 1.  
*Protococcus Magma* de Bréb. *Ulva montana* Lightf.  
Ad saxa granitosa quartzosaque Vogesorum.







1292. protocoocus auriatus *KtUx, Sj?*. *Alg. p.* 206.

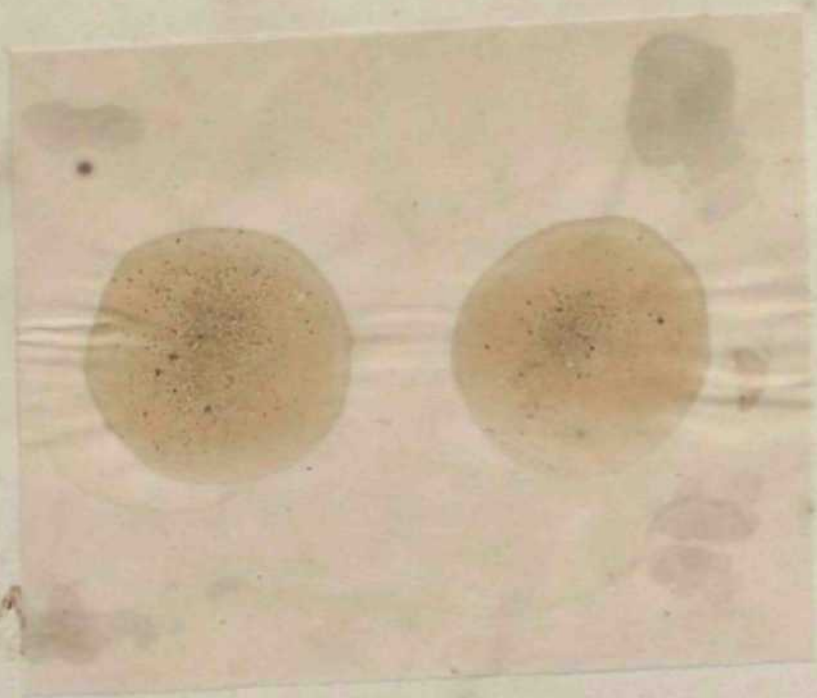
Протококцис золотистый *Латгетт.*

Ad muros (rice ad *litre* ut .iii A'ri;ing) catdarii horti botanid fi-iburgensis  
*observavit ain. At. linium.*

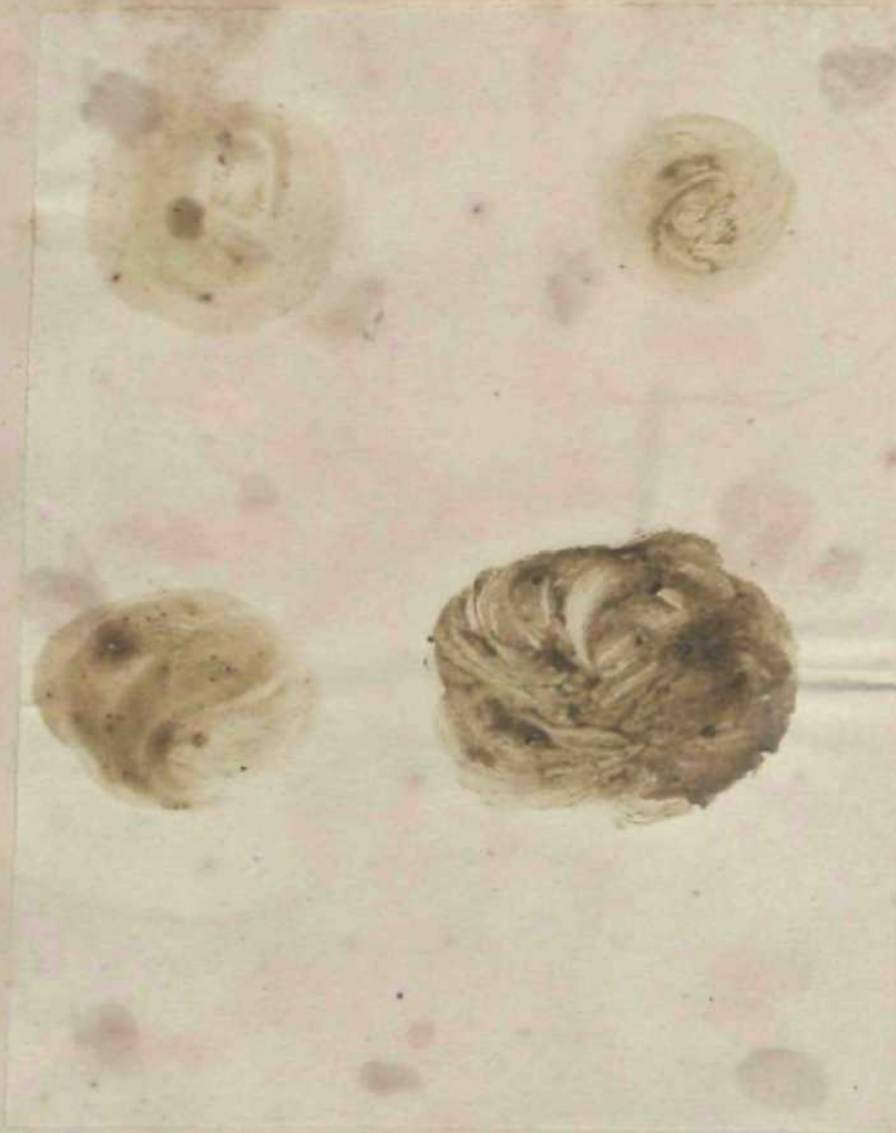




1295. *Protococcus viridis* Ag. — Kütz. *Sp. Alg.* P- ^ el tah.'pfojcA, tab. 5.  
Ad muros circa Romarimontem ubi autumnus am. Demangeon.







1294. Proiocoams vulgpris v. l>. **plewococua h'tils. Sp, Alg. p. UK).**

Philococcus cuinumms to. b. *JtuiziJab. phyc. 1, tab. 3,*

«J ataroa te&JtaoeUBi Nvuterii [Ptombiires) vapore aquanuu iLeniulitujj iacJo» J'Je anno.





1290. *DiJytnupriutii Grevillei K'uts. Sp. Alg. p. 189.*

*Dt'smitiirrn uyiindricMiiii Qrtto. Cr. Scol. Ft. tab. 2&3.*

*!u slsfuis VogehHrum, Julia. M> am. Drtiutgrbn acceptum.*





VSR. *Cladrium striatulum* Ehreih. — *Kütz. Sp. Alg. p. 165,*  
1 In paludibus Brisgovi\*, Alsmj\*, Loihariogia: Estate.









1298. *Cbsteriaio Ehrenbergii Menegh.* — *k'ulz. Sp. Atg. p. 165.*

lit aqnb Brkj^rbe, Alsatia; el I^Lhariugis.  
r»oni|ibria ab a ill. jDe *Bribuian* accopinius.





1299. *Cocconema lanceolatum* *Efabrenb.* — *Kütz. Sp. Atg. p. GO.*  
In *touts GaUir* el *Germania*.<sup>1</sup>  
*Specimina am. Lebailty dnft FataUt legit el beuignc toniuitiricavil.*





1500. *Melosira varians* Ag. — *Kütz. Sp. Alg. p. 28.*

*Gailliodella varians* Fhrenb.

In aqua dnki per lolain Europam, nostra spcciniina ab am, H<fl)ta:f\*ret acecpimus







INDIAN BOTANIC GARDEN.  
LIBRARY.

NUMBER

ACCESSION

CATALOGUING

CLASSIFICATION

DATE



BOOK CARD  
Indian Botanic Garden Library  
BOTANICAL SURVEY OF INDIA

Call No. \$£["£•.....Ace. No.f\$.iQiX?J.....

Author.....\*^^S^^jJi<sup>1</sup>^\* bffrlkehX)

Title *Stiropus cryptogamae Vogeso Hhyn*  
*-anae quas in Rhini Superiotis...*

Name of BoimweT/Code No.	Date of Issue	Date of Return

INDIAN BOTANIC GARDEN LIBRARY  
BOTANICAL SURVEY OF INDIA

Jm

